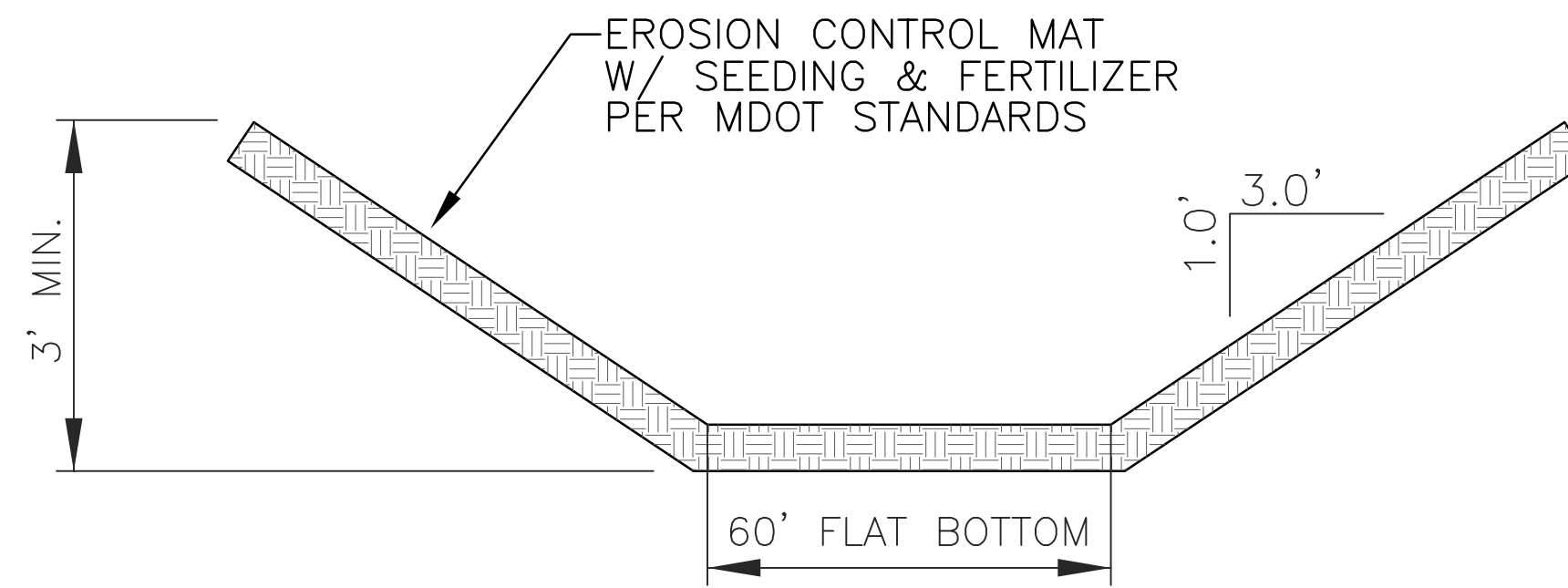
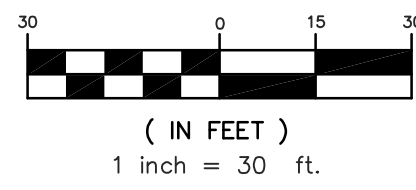
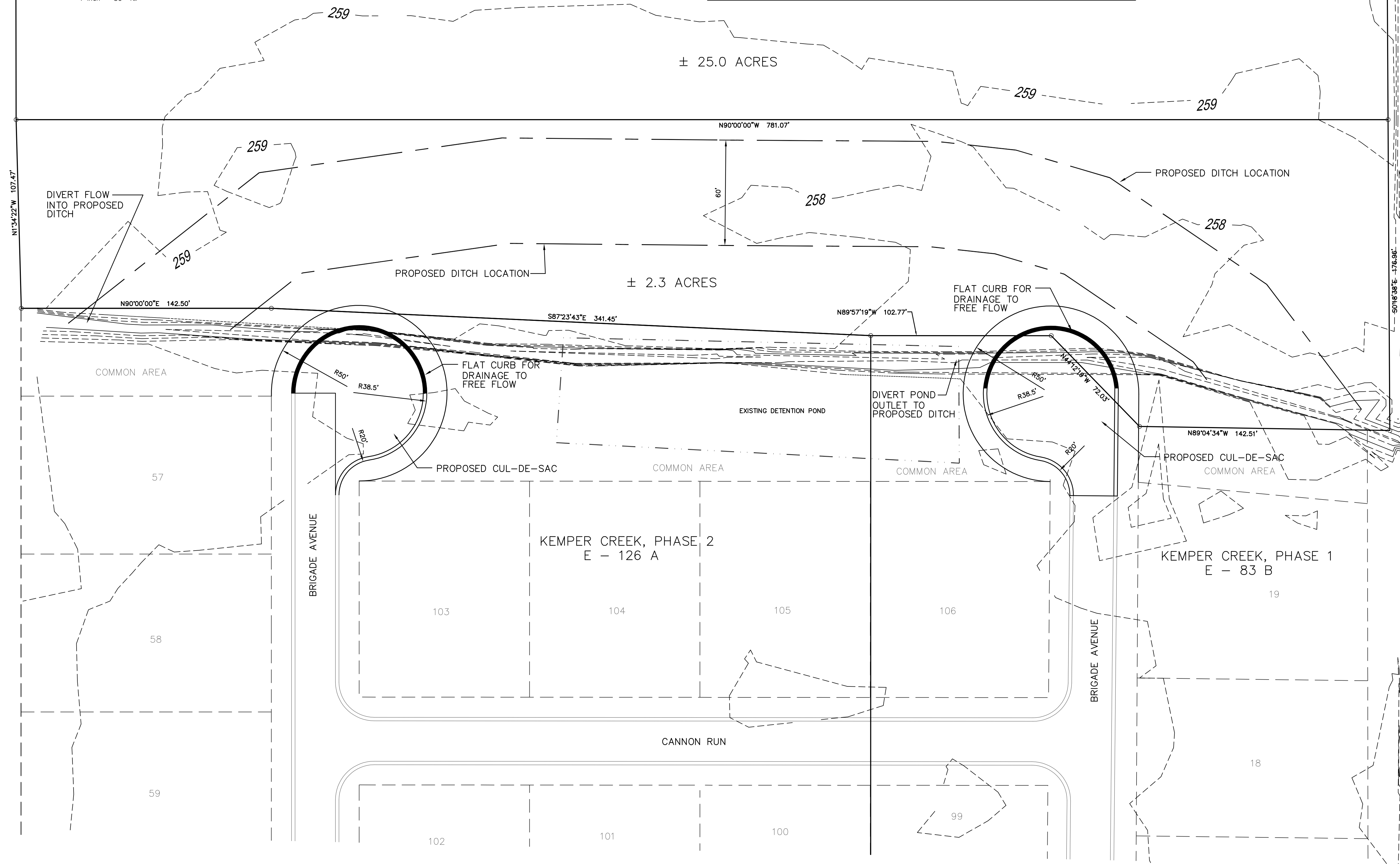


GRAPHIC SCALE



TYPICAL DITCH DETAIL



- NOTES:
1. PROPOSED CUL-DE-SACS SHALL BE FIELD VERIFIED FOR CONNECTION TO EXISTING PAVEMENT.
  2. DETENTION INFORMATION PROVIDED BY AQUA ENGINEERING SERVICES, LTD. DATED 02-18-14.

DRAWING NO.

H D LANG AND ASSOCIATES, INC.

POST OFFICE BOX 16085

JACKSON, MISSISSIPPI 39236

601-362-4886

PROJECT

KEMPER CREEK  
(CUL-DE-SAC ADDITIONS)

DESCRIPTION

CUL-DE-SAC ADDITIONS  
FOR LOTS 11-29

DATE

REVISION

BY

DRAWN BY: JBH

DATE: 02-26-14

SCALE: 1" = 30'

BOOK: PAGE:

PROJECT NO.: 14-025

SHEET